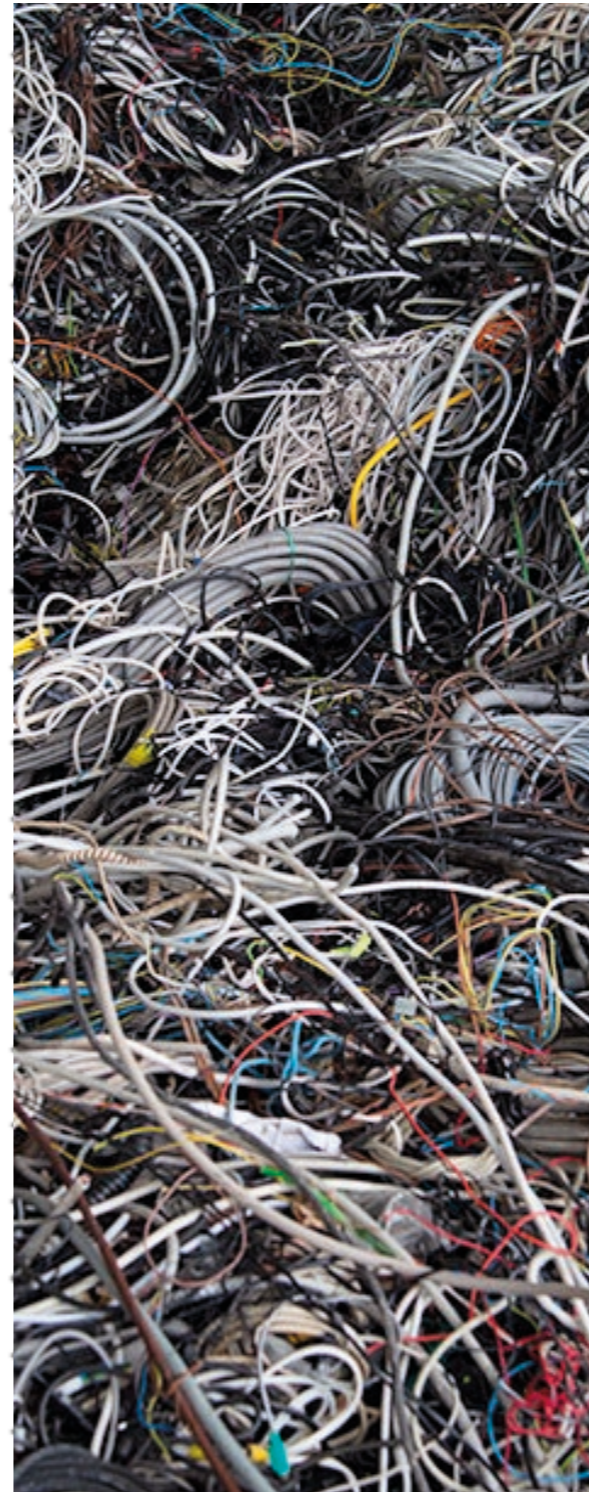
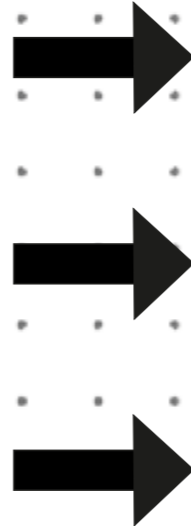


THE TECHNICAL RECYCLE-RESPONSIBILITY WE ALL HAVE

# KLIMA2+



#### WHAT IS THE OVERALL AIM?

The aim for the whole exhibition is to give an overall positive experience of climate change. To not only feel it hopeless, more to give a lighter perspective. There are things we can do, and to give the visitor a local experience. These are the changes we will get and why. It should be a place open for discussions, learning, motivation.

I want to add a comment on the technical waste we are all part in creating. The recycling responsibility we all have.

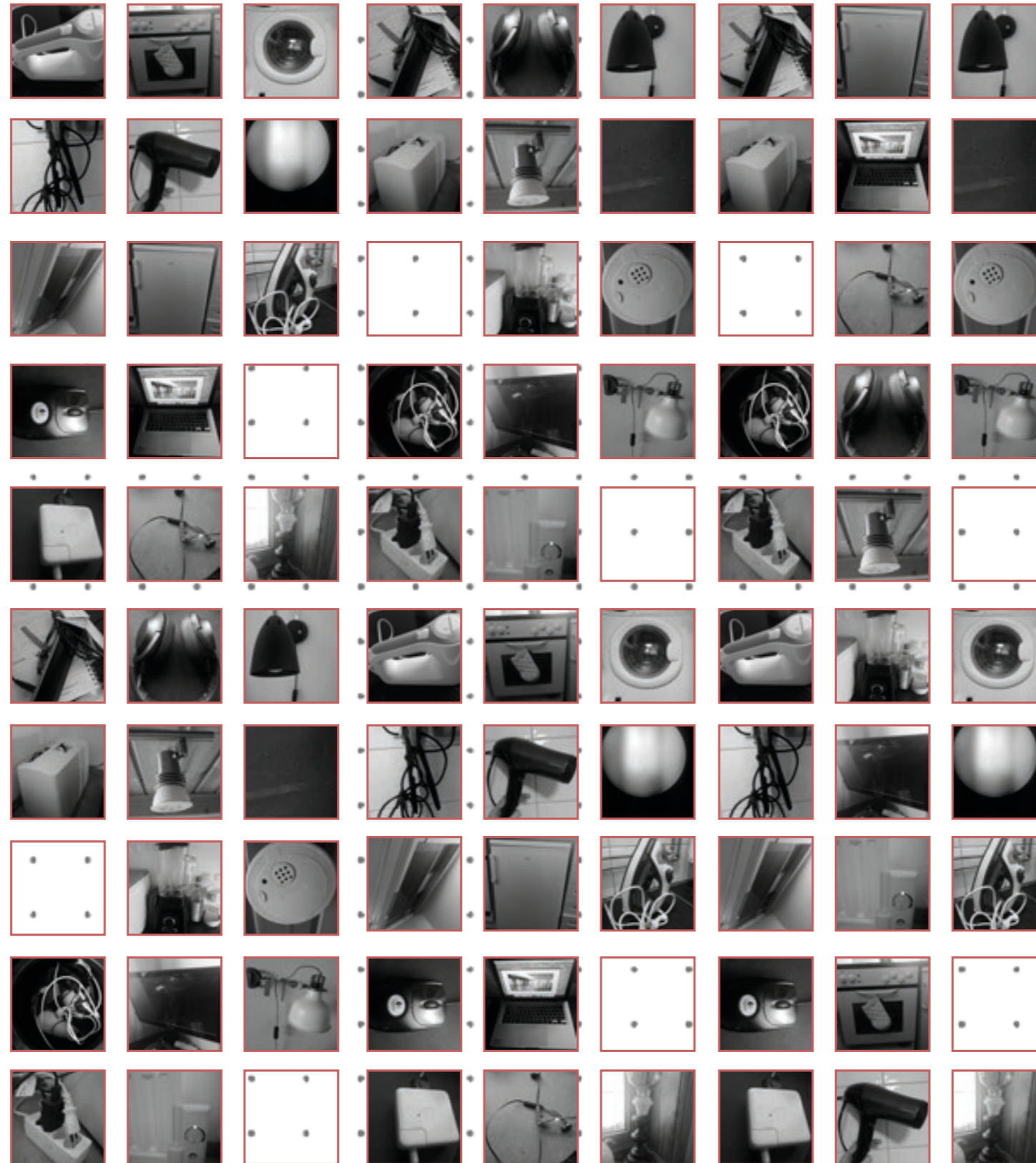
We are now, more than ever before, constantly surrounded by technical machines, bluetooth devices and complicated computers. It adds up to the crazy reality where we always are aiming for new things. Better phones, new tv, coffee machine that can turn on itself - the list just get longer and longer. But the real problem is what to do with the old phones? Today we don't have to worry about the consequences of the waste we generate. We just "send it" for recycling and think this will work out well. Someone else has to figure out exactly how. Often the waste is sent to a third world country, and ends up like this waste land, where the piles just grow bigger and bigger.

So with this in mind, I thought about the idea of "what if" we all had to take part in taking care of the recycling part. What if you and I had to think of a new way of using the old cables instead of throwing it away? What if there was a law forcing us to always use what we have. Would I then buy less new things?

So with this in mind I want to add humor into the existing exhibition. To give the visitor a lighter entrance to this quite serious topic.

## LIST OF ALL THE PROJECTS I HAVE AT HOME

- 2 Computers - One Mac and One Pc
- Phones -
- Cables
- Lamps
- Usb
- Headphones
- Computer Mouse
- Charging Cables
- Extra Cords
- Drawing Tablet
- Sewing Mashine
- Kameras
- Kamera Lenses
- Tv
- Crome Cast
- Speaker
- Drill
- Watercettel
- Electric Mixer
- Timer
- Flashlight
- Hairdryer
- Straightener
- Electric Toothbrushes
- Drill nr 2
- Element
- Freezer
- Fridge
- Iron
- Washing machine
- oven
- Fan
- air mattress
- light table
- Microwave
- Thermometer
- Vacuum cleaner



### FOR WHOW?

The overall expo is meant for a group of kids or young people, even if the problems are and will affect a broader group. Therefore I was thinking of connecting the object I want to add to something we all can relate to.

In my search for materials to use I went through my own home. Starting by making a list of all my personal belongings that is one way or another technical. I thought this would be an easy task but the more things I found the more I realized that my home today is flooded with technical stuff in every corner of every room.

I have then started to take pictures of all these things, to get a bigger picture of how much this actually is.

This exercise gave me the idea to use all this stuff we have at home as an example of how absurd this has become.

Hopefully by showing this pile of things I could start a reflection by the visitors.

# “WE ALL CONTRIBUTE TO CREATING THIS TECHNICAL MONSTER”

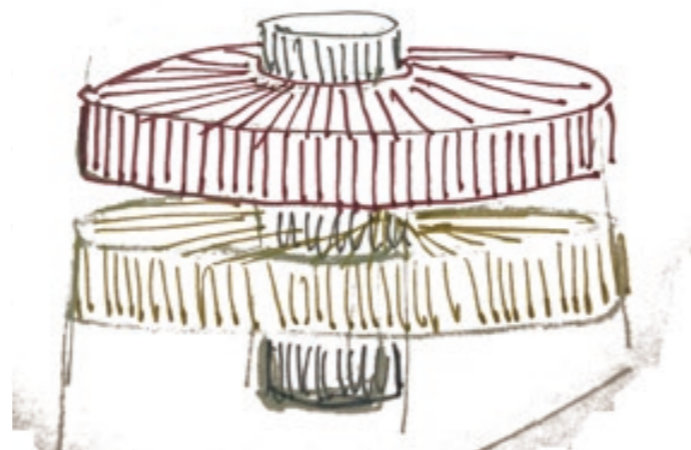
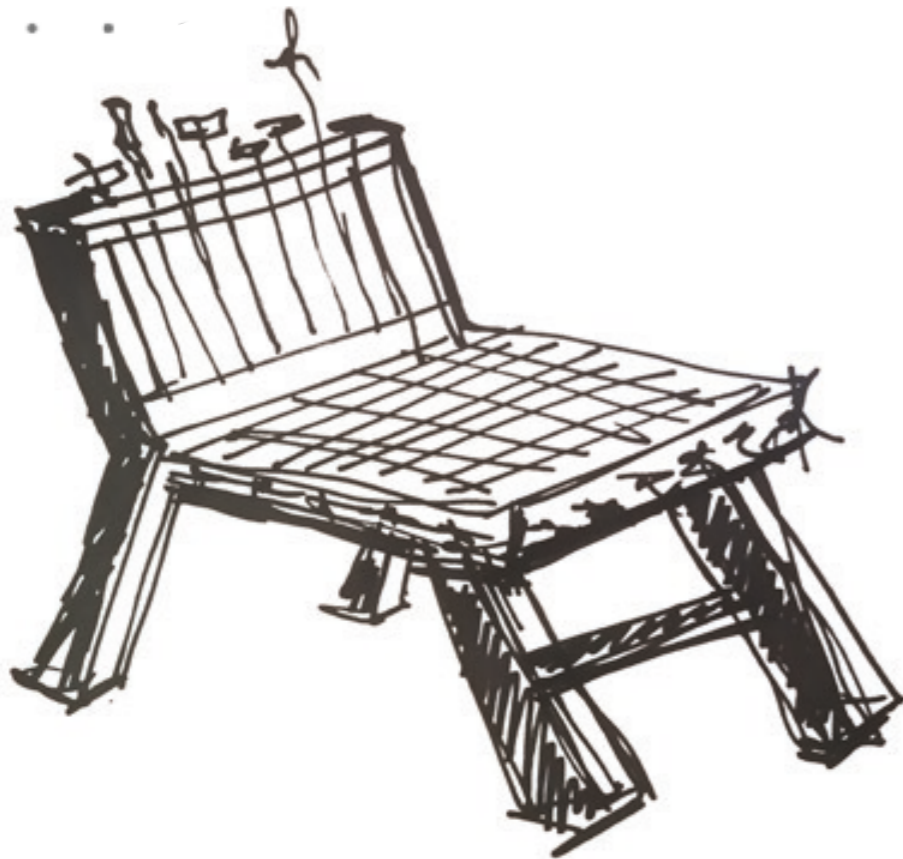
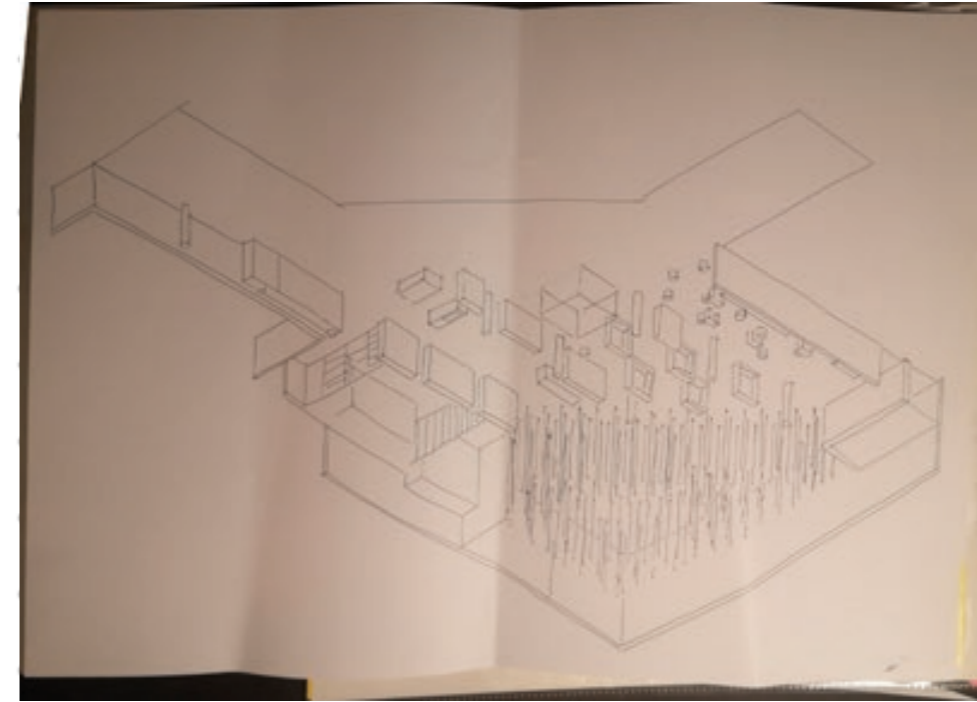


The elephant in the room. Everyone knows about the problem but no one talks about it or takes their own responsibility seriously. It is a well known problem we all should think about daily, but no one does.

So as an addition to the existing exhibition I wanted to make an abstract comment on how much stuff we actually have, and make an installation, or object that would show this in an interesting way.

The idea is to do it with a sense of humor so at first glimpse it looks “cool and funny”, maybe you stop by, take a selfie or picture. But the concept behind it is to say, we have to start acting, we are all part in creating this monster. This technical monster.

# SKETCHES



# INSPO



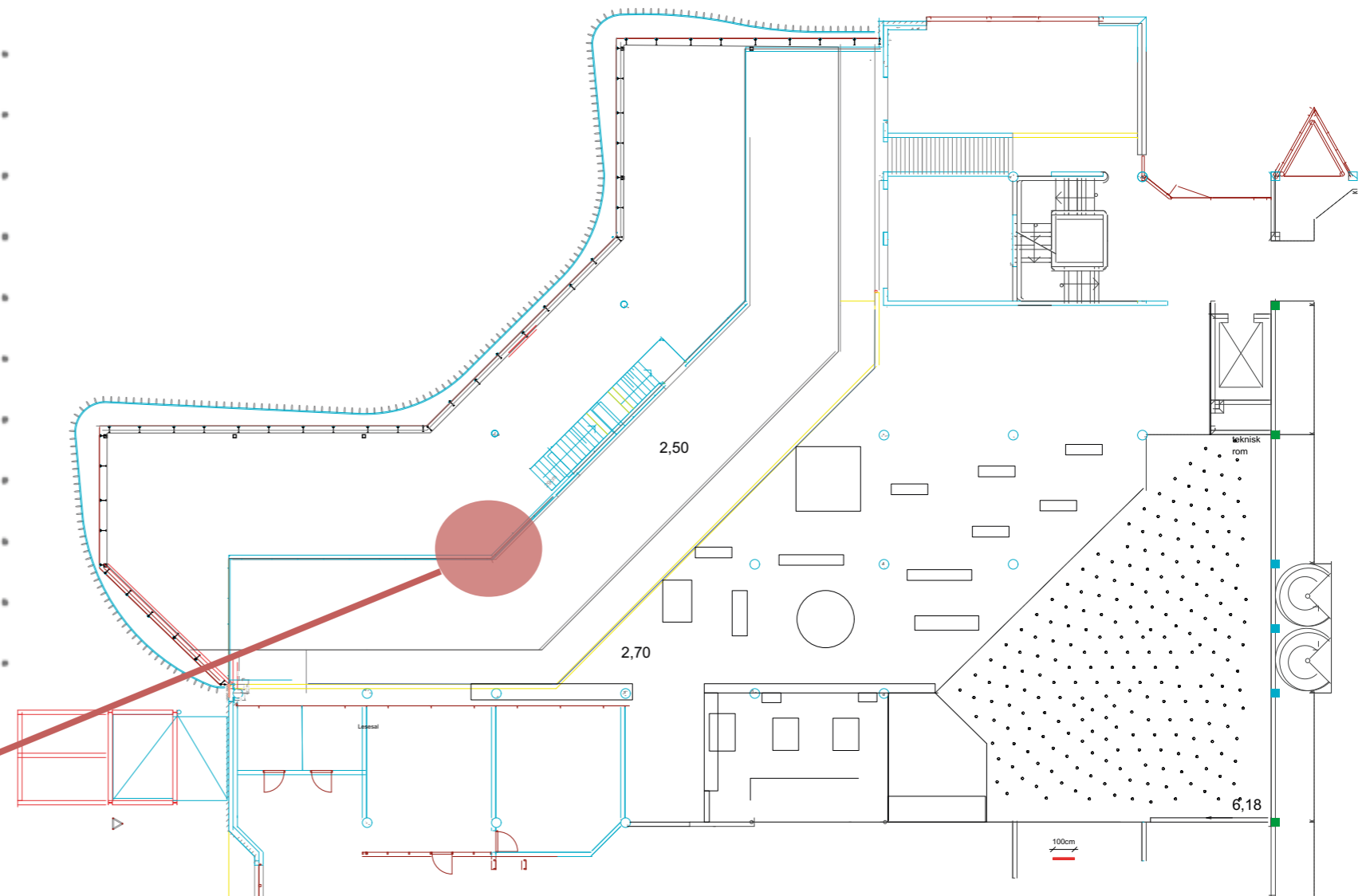
First ideas

Should it be an object reminding of furniture?

Chairs, Lamps, Tables, House, Car or - - > Chandelier

The contrast between an expensive chandelier, which we refer to as expensive. And the recycling process, which for many sounds like something not so fancy. I chose to go for the chandelier because I liked this bridge between fancy and trash.

I am aiming for this abstract object referring to things we have around us. I want to put them in a different perspective, to advance a playful mindset with recycling. I wish to bring a smile to the visitor.

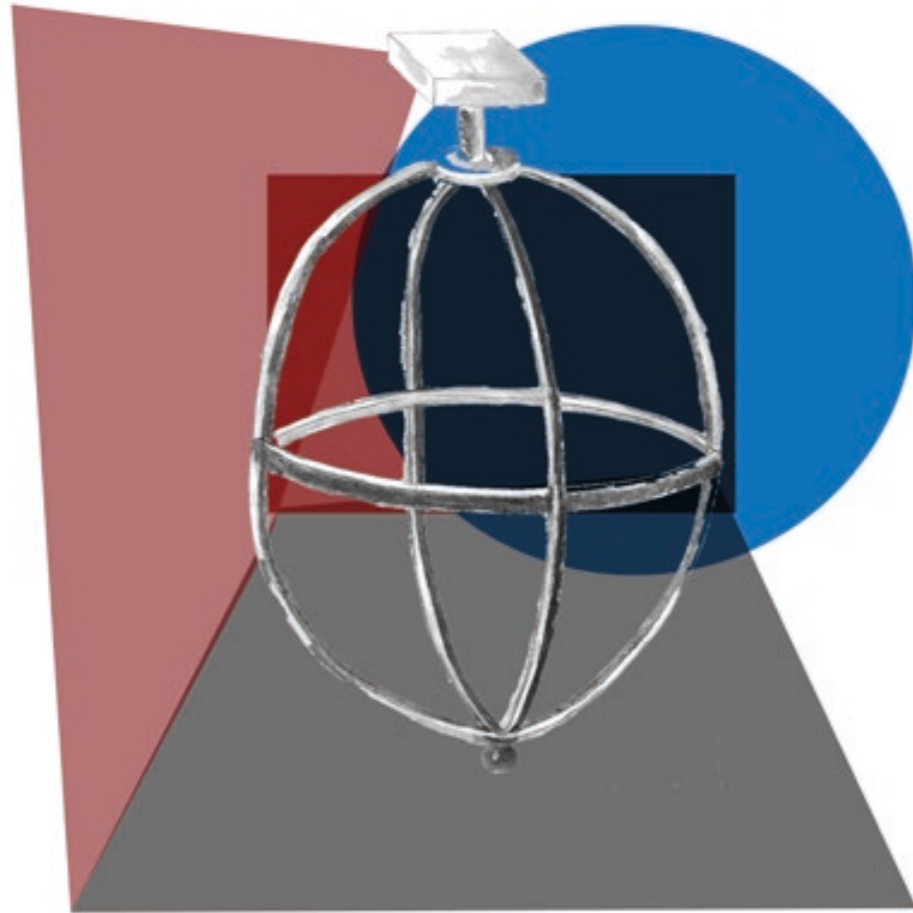


WHERE?

I was planning to use the area in front of the exhibition. To give this space a light introduction with my installation. It will be a first impression, something that can generate a humorous feeling. Not too serious at first sight. Also with the forest in the back I think it will be a good compliment, so when you stop up there you will get a first glimt of the forest in the back.

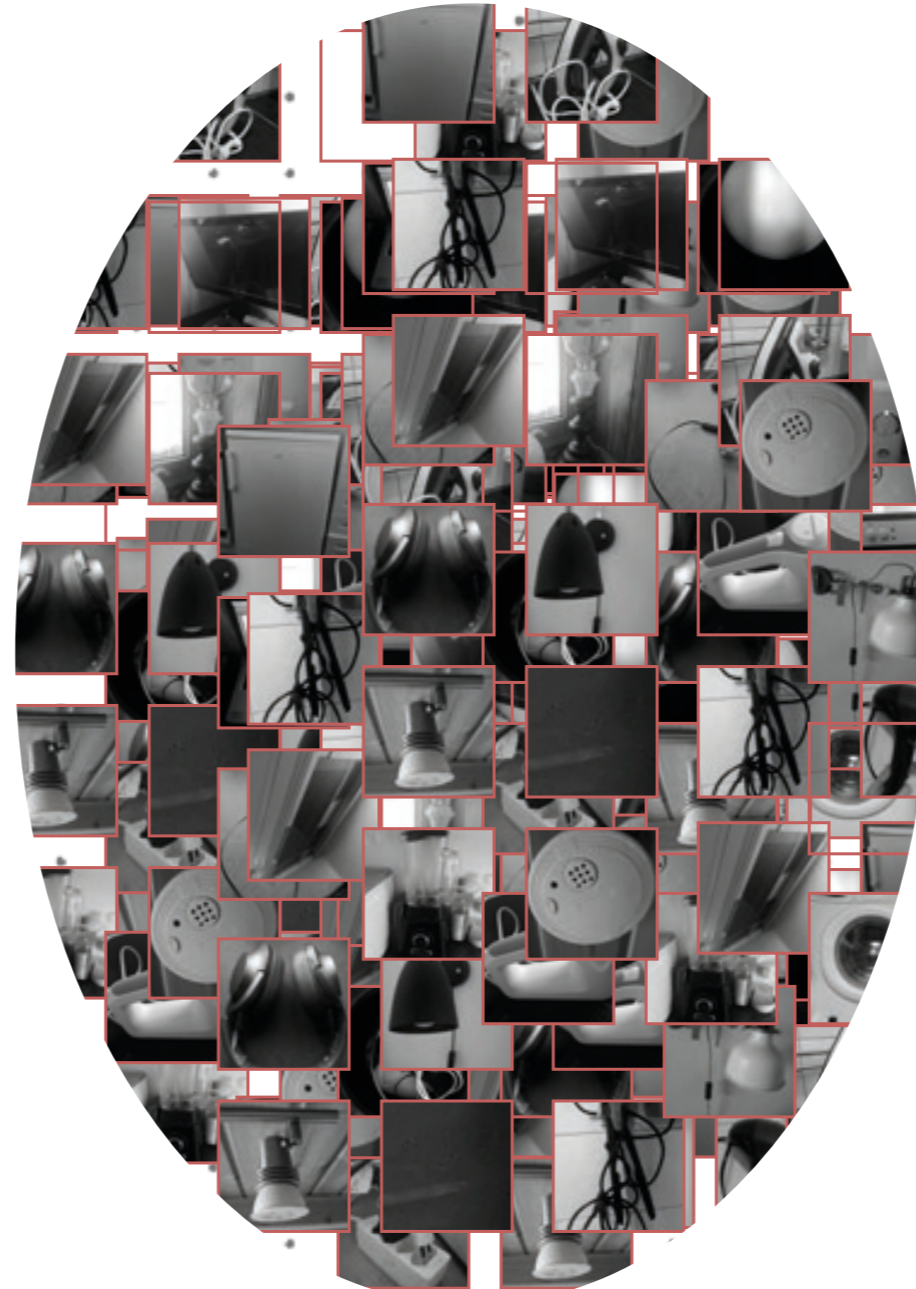
My installation will work as a light introduction, then you will have the area with some more reading and serious facts. At last you will go into the forest which will give a lighter perspective again.

The idea is to hang it over the stairs, just a bit to the left. This way you will see it form many different angles.



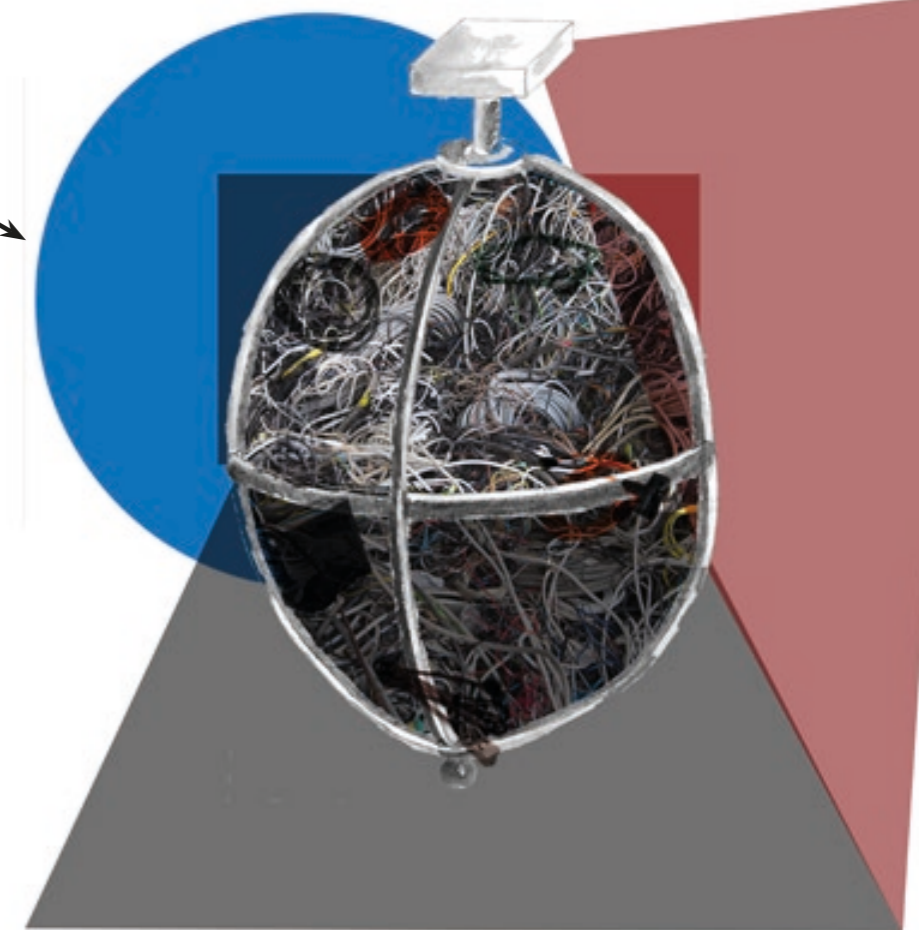
WHAT?

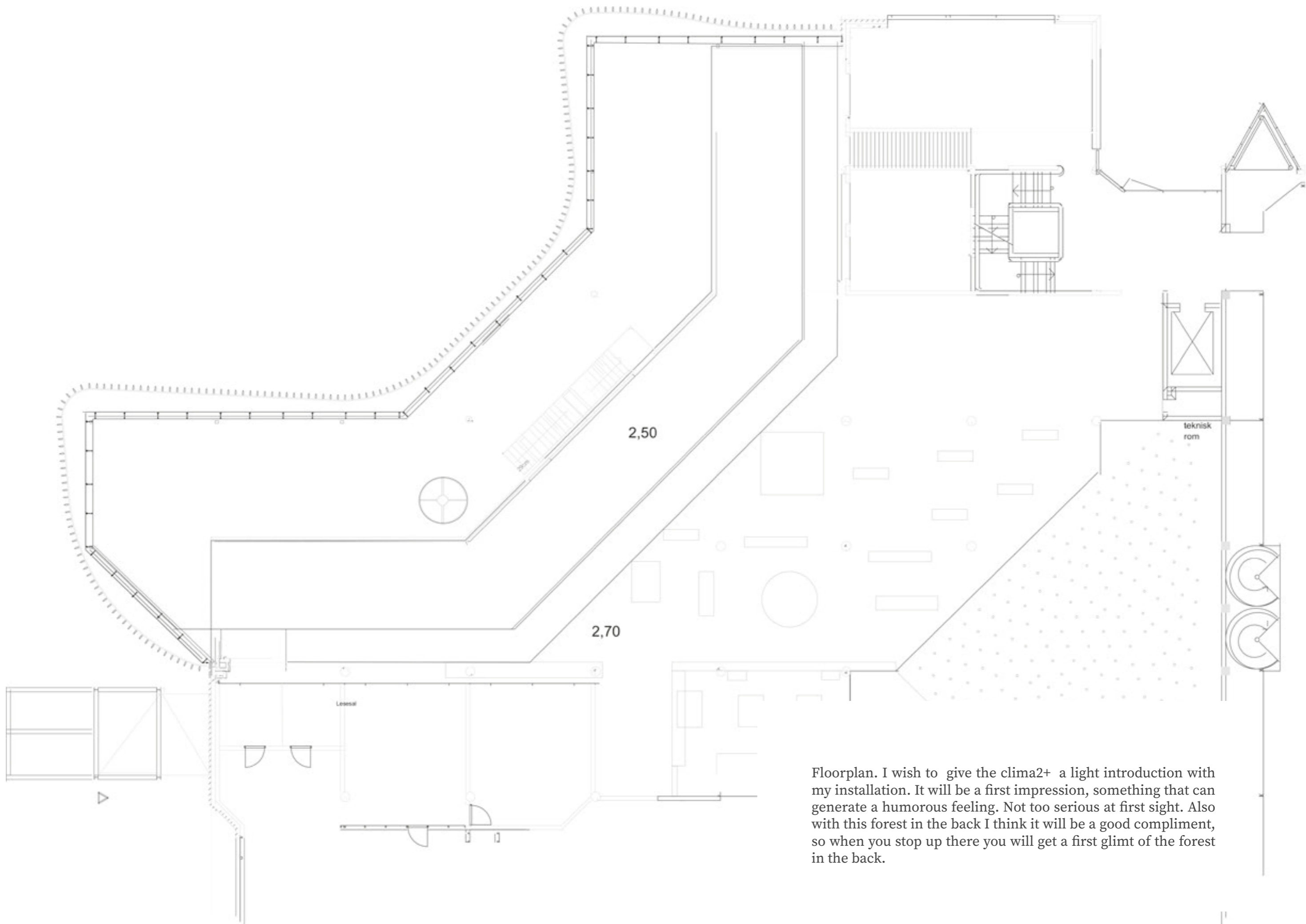
I want to make a technical electronic waste installation. It will be made out of recycled electronic parts in all sorts of colors and shape. I am aiming for this abstract object referring to things we have around us. I want to put them in a different perspective, to advance a playful mindset with recycling. I wish to bring a smile to the visitor. The underlying idea is to make a comment on our responsibility, and how we will have to change our behaviors.



It is made of an ellipse shaped round ball. The skeleton is made in metall, and inside I want to fill it up with the everage standard families electronic parts they have in their homes.

This is to show the volym of all this stuff - that we don't really think about but takes a lot of space. The underlying idea is to make a comment on our responsibility, and how we will have to change our behaviors.

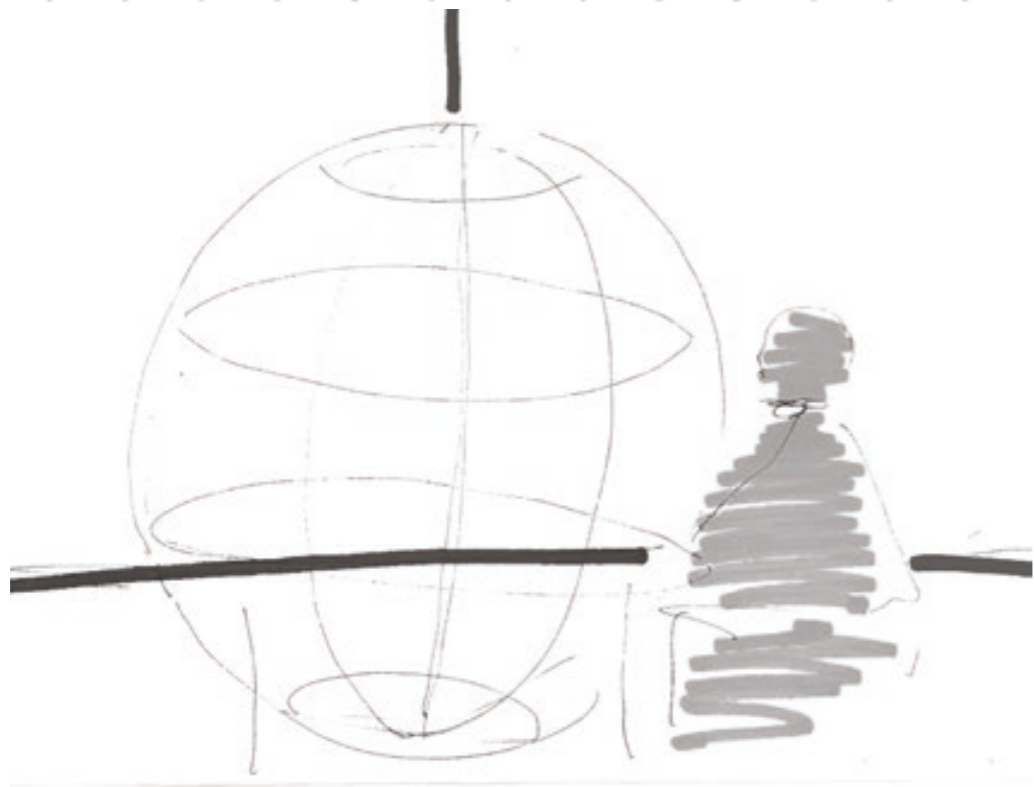




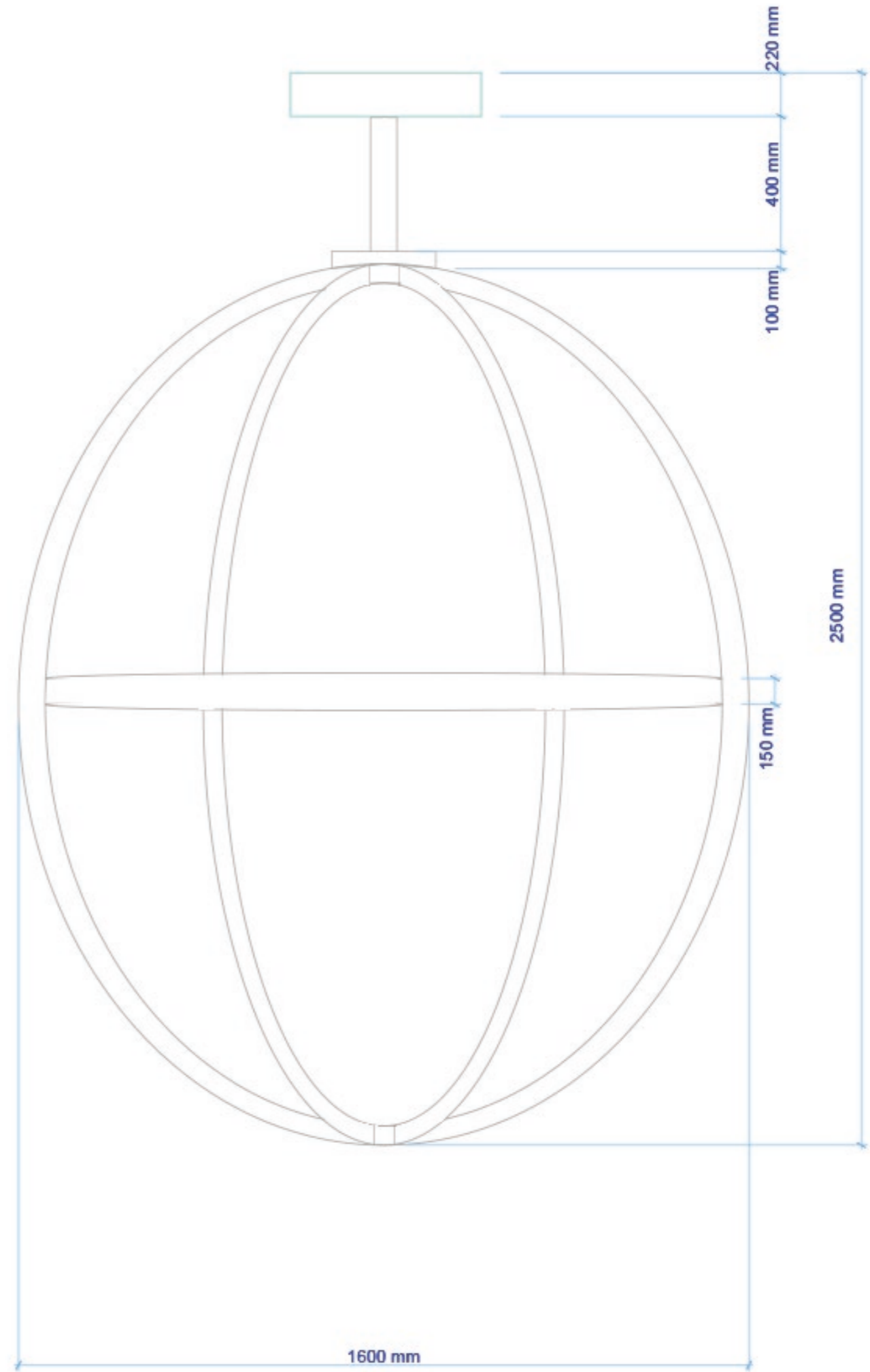
Floorplan. I wish to give the clima2+ a light introduction with my installation. It will be a first impression, something that can generate a humorous feeling. Not too serious at first sight. Also with this forest in the back I think it will be a good compliment, so when you stop up there you will get a first glimt of the forest in the back.



From inside the main exhibition

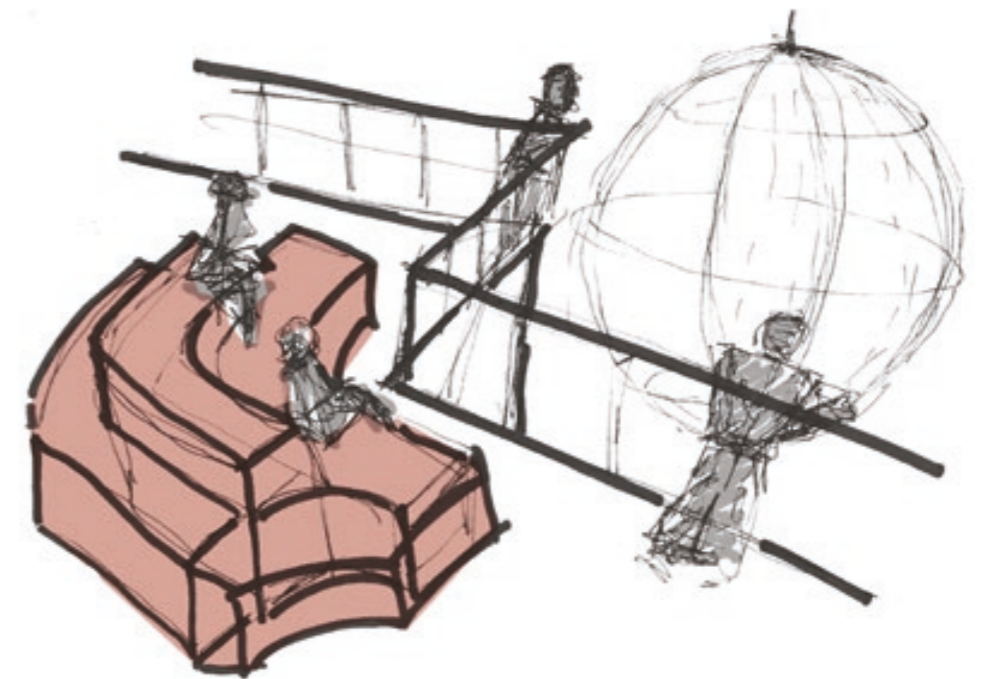
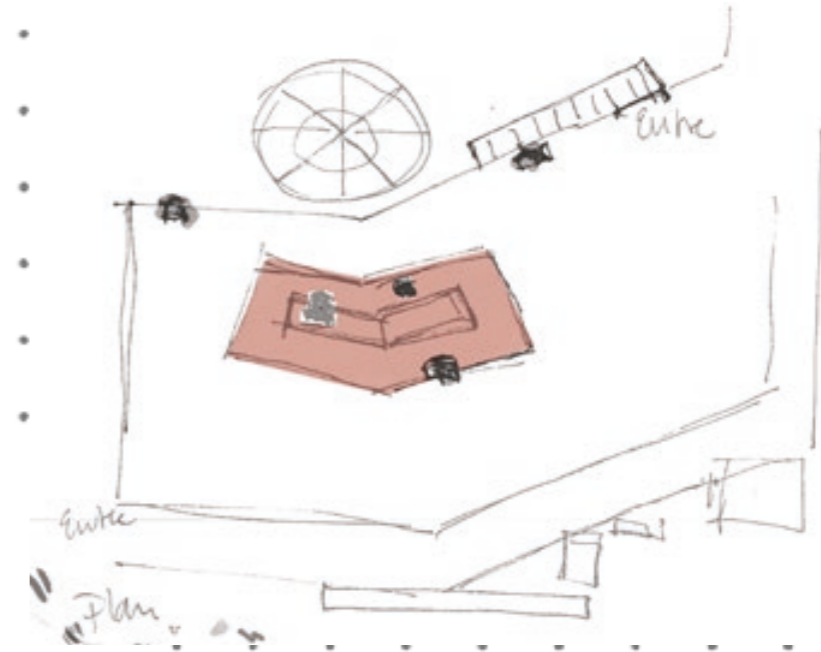


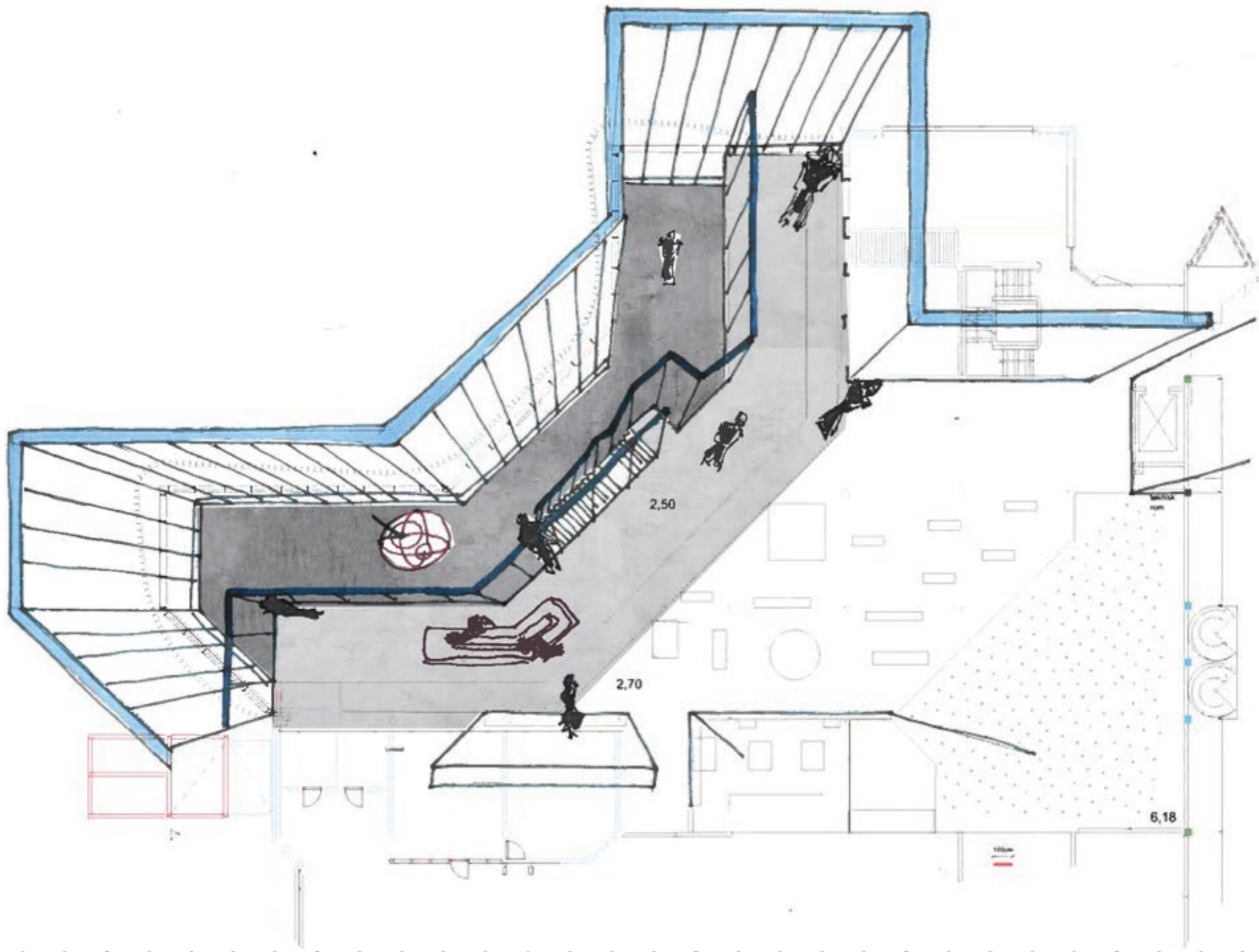
Drawings of the object - dimentions





Further idea - If I would continue to develop the idea, I would possibly add a seating area next to the glass railing. This would connect the different exhibitions and give a natural place to sit and reflect on the experience of the museum.







This is a visualization on how it could look like walking past it - the intention to give the visitor a abstract object that can relate to climate and the huge challenges we have in front of us,

I hope my contribution will generate a positive experience at first glimt. Both for kids and adults to look at and maybe think - What is this? And maybe it will open up for reflection afterward